

# ***Options for Animals***

## ***College of Animal Chiropractic***



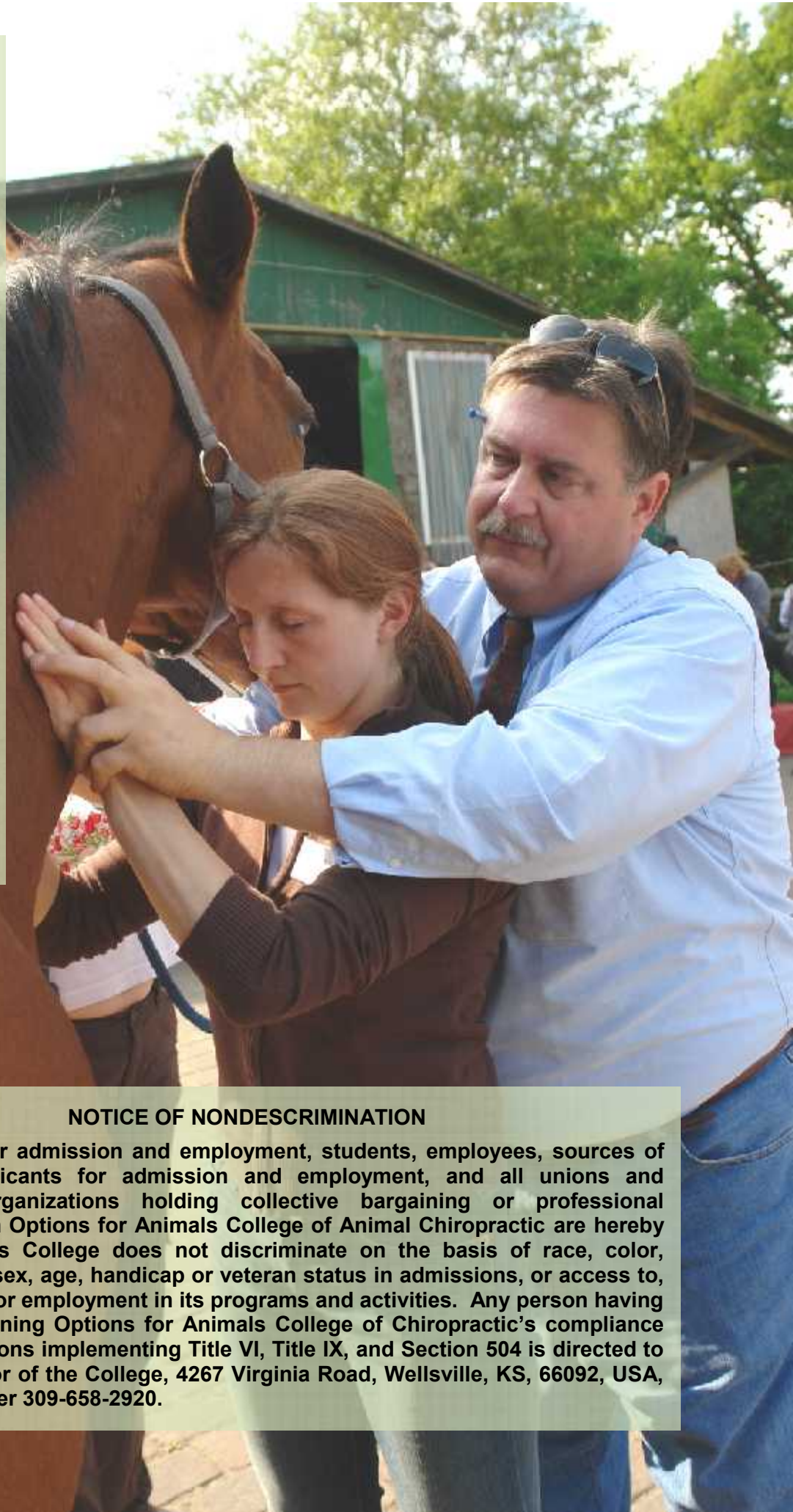
**ESSENTIALS IN ANIMAL CHIROPRACTIC COURSE CATALOG  
2012 - 2014**

**The Administration of Options for Animals College of Animal Chiropractic reserves the right to make changes regarding material contained in this catalog. The changes will be in effect for all current and future students. Students are responsible for becoming acquainted with all requirements contained in this catalog.**

**The Administration is not responsible for any changes in admission requirements, advanced standing or privileges listed in this catalog due to mandates by state boards, governmental agencies, and/or accrediting agencies.**

**Options for Animals College of Animal Chiropractic will provide biannual updates to the Catalog.**

**Options for Animals College of Animal Chiropractic abides by all federal and state regulations and requirements.**



#### **NOTICE OF NONDISCRIMINATION**

**Applicants for admission and employment, students, employees, sources of referral of applicants for admission and employment, and all unions and professional organizations holding collective bargaining or professional agreements with Options for Animals College of Animal Chiropractic are hereby notified that this College does not discriminate on the basis of race, color, national origin, sex, age, handicap or veteran status in admissions, or access to, or treatment of, or employment in its programs and activities. Any person having inquiries concerning Options for Animals College of Chiropractic's compliance with the regulations implementing Title VI, Title IX, and Section 504 is directed to the Administrator of the College, 4267 Virginia Road, Wellsville, KS, 66092, USA, telephone number 309-658-2920.**



**Options For Animals**  
COLLEGE OF ANIMAL CHIROPRACTIC

© 2011, Options for Animals

Published by  
Options for Animals  
4267 Virginia Road, Wellsville, Kansas 66092 USA  
309-658-2920

[Options4Animals@aol.com](mailto:Options4Animals@aol.com)  
[www.animalchiro.com](http://www.animalchiro.com)

Information reproduced or reprinted from this handbook may be so done only for the good of animal chiropractic.

**OPTIONS FOR  
ANIMALS**

**College of  
Animal Chiropractic**

[www.animalchiro.com](http://www.animalchiro.com)  
[Options4Animals@aol.com](mailto:Options4Animals@aol.com)  
+ 1 309 658 2920

**Administrator of College:**  
Dennis Eschbach, DC

**Main Campus:**  
4267 Virginia Road  
Wellsville, KS 66092  
USA

**Registrations:**  
PO Box 3682  
Cartersville, GA 30120  
USA

**AFFILIATES**

**International Academy for  
Veterinary Chiropractic**

[www.i-a-v-c.com](http://www.i-a-v-c.com)  
[IAVC2004@hotmail.com](mailto:IAVC2004@hotmail.com)  
+ 49 4282 590099

**Germany (DE):**  
Located in  
Sittensen, Germany

**England (UK):**  
Located at  
Anglo-European College  
of Chiropractic in  
Bournemouth, England

**Registrations:**  
Dorfstrasse 17  
27419 Freetz  
Germany

# Accreditations and Approvals



The College and this Postgraduate Basic Animal Chiropractic Course is Approved by the State of Kansas Board of Regents. Options for Animals College of Animal Chiropractic is a private post-secondary educational institution. The Kansas Board of Regents is a nine-member body which governs six state universities, and supervises and coordinates 19 community colleges, five technical colleges, six technical schools and a municipal university. The Kansas Board of Regents' members are appointed by the Governor and confirmed by the Kansas Senate. Each member serves on the Board as well as various councils and committees throughout the year.

The Kansas Board of Regents authorizes Private and Out of State institutions to operate in Kansas with a Certificate of Approval renewed annually. These schools are business enterprises offering instruction for business, trade, technical or industrial occupations leading to a certificate, diploma, or academic degree.

**KBOR Vision:** The Kansas Board of Regents Academic Affairs Unit will be instrumental in planning and developing an integrated, seamless, synergistic postsecondary educational system.

**KBOR Mission:** The Academic Affairs Unit exercises strategic leadership for quality educational development to meet the diverse academic, workforce, and lifelong learning needs of all Kansans.

For further information on the Kansas Board of Regents, please contact them at 1000 SW Jackson St., Suite 520, Topeka, Kansas 66612-1368, (785) 296-3421 or [www.kansasregents.org](http://www.kansasregents.org).

Kansas Statutes specifically governing our College include K.S.A. 74-32,162 through 74-32,183. These statutes may be searched and viewed on line at:

<http://www.kslegislature.org/legsrv-statutes/index.do>.

Kansas regulations adopted by KBOR and concerning our College are set forth at K.A.R. 88-28-8, and these regulations may be searched and viewed at:

<http://www.kslegislature.org/legsrv-kars/index.do>

## Complaint Process

Private postsecondary institutions operating in Kansas must meet and maintain certain standards of quality in order to qualify for a certificate allowing them to offer or provide training or course work to Kansas citizens. It is the mutual goal of the Kansas Board of Regents and the certified institutions to provide quality educational training and programs. When problems arise, students should make every attempt to find a fair and reasonable solution by taking the following steps:

1. Discuss the problem thoroughly with the teacher.  
If there is no resolution continue to step 2.
2. Discuss the problem with the manager or director of the school.  
If there is no resolution continue to step 3.
3. Discuss the problem with the owner of the school.  
Unless the complaint involves a violation of state law that KBOR is authorized to enforce, KBOR cannot intervene or direct the school to change its decision.

If the matter concerns a possible violation of state or federal law and the school's decision is not satisfactory, the complainant may contact KBOR. Such persons shall write to the KBOR using a complaint form provided by the school or available at:

<http://www.kansasregents.org/resources/PDF/524-ComplaintProcedureandForm.pdf>

**The College and this Postgraduate Basic Animal Chiropractic Course is Approved by the American Veterinary Chiropractic Association (AVCA).**



**The College and this Postgraduate Basic Animal Chiropractic Course is Approved by the International Veterinary Chiropractic Association (IVCA).**



**Options for Animals Animal Chiropractic College is a founding Member Institution of the Association of Animal Chiropractic Colleges.**



**This catalog was designed as a guide for applicants and participants in the Options for Animals Postgraduate Basic Animal Chiropractic Course. Options for Animals teaching and support staff have worked diligently to ensure this course is one of the best educational experiences possible. Please do your part by taking the time to read this Catalog.**

**Thank you for inquiring about and/or attending Options for Animals and giving the gift of health by offering chiropractic to the animals in your practice.**

# Table of Contents

**Notice of  
Nondiscrimination** 2

**Accreditations  
and Approvals** 4

**Choosing the Right School** 8

**Our Original Founder** 12

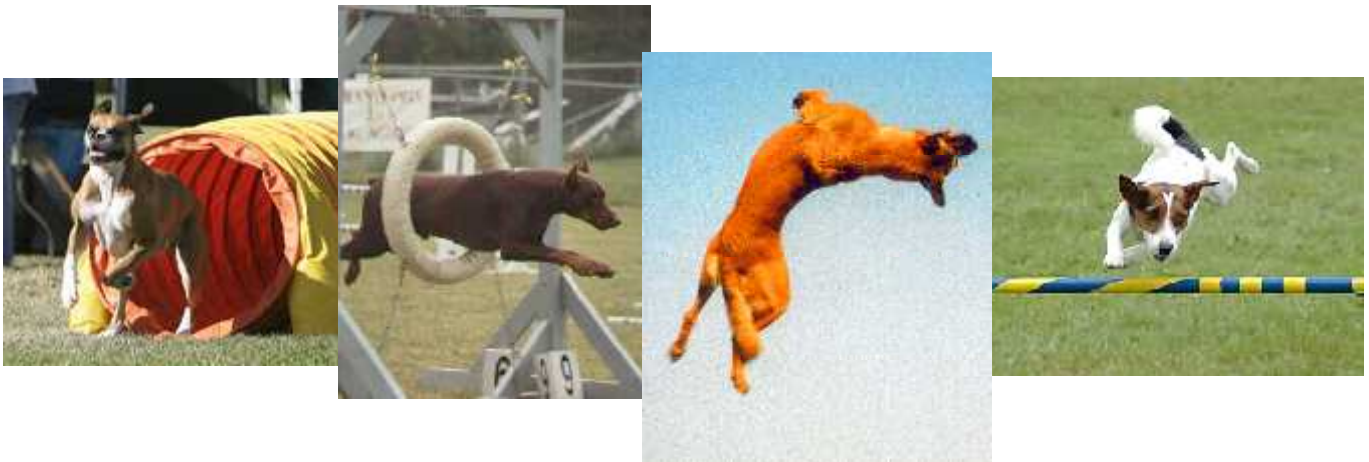
**The Locale; Kansas City** 13

**The College** 14

- Facilities of the College

- Strengths

- Faculty Accomplishments



**The Owners of  
Options for Animals** 9

**From Options for Animals;  
Our Mission** 10

**Honoring Our Past** 11

**The Profession;  
Animal Chiropractic** 17

**The Basic Animal  
Chiropractic Course** 21

- Policy Changes

- License Requirements

<b>Admissions</b>	<b>22</b>
- Eligibility	
- Application Process	
- Payment Options	

<b>Fees and Expenses</b>	<b>23</b>
- Tuition	
- Deposits	
- Refunds	

<b>Rules of Conduct</b>	<b>36</b>
- Drug Policy	
- Firearms Policy	

<b>Faculty</b>	<b>37</b>
----------------	-----------



<b>Academic Calendar</b>	<b>25</b>
--------------------------	-----------

<b>The Curriculum</b>	<b>27</b>
- Class Descriptions	
- Academic Review	
- Attendance	

<b>Enrollment Application</b>	<b>32</b>
-------------------------------	-----------

<b>Code of Ethics</b>	<b>36</b>
-----------------------	-----------

<b>Map</b>	<b>40</b>
------------	-----------

<b>Lodging</b>	<b>42</b>
----------------	-----------

# Choosing the Right School

*(From the Kansas Board of Regents)*

Choosing a school is a very important decision that should be made with care. Beware of misleading advertising about an educational opportunity that sounds too good to be true. It most likely is not a legitimate degree.

## **Consider the following:**

### **Accreditation**

Many online sites claim to be accredited institutions and even list the name of an accreditation agency. No Kansas institution may call itself accredited unless the accreditation agency is recognized by the United States Department of Education. Those accreditation agencies that are recognized by the United States Department of Education are listed on the United States Department of Education website [www.ed.gov/admins/finaid/accred/index.html](http://www.ed.gov/admins/finaid/accred/index.html).

### **State Approval**

Each state has a law governing educational institutions. Most states license an online school that is physically located within their borders. Licensed schools are required to meet a set of standards and to provide accurate consumer information to prospective students. In Kansas all private and out-of-state postsecondary educational institutions are approved by the Kansas Board of Regents with the exception of cosmetology (Kansas Board of Cosmetology) and barbering (Kansas Board of Barbering).

### **Transfer of Credit to Another Institution**

The transfer of credits is a decision made by the receiving school. No institution should tell an individual that their courses will transfer unless they can show a written agreement listing the specific transfer courses. If an individual knows that he/she wants to attend another school, it is always wise to call the second school to ask if they take credits from the first.

### **Employment**

If the ultimate goal is employment, a call to a prospective employer or an employer in your area of interest is important. It is also good to check with an agency in the state [you propose to work] where a license is required to verify that the education you are considering will meet their license requirements.

Be sure to ask any perspective employer what level of education is required for the occupation.

### **Complaints About the School**

The Kansas Board of Regents, county attorney offices and the Kansas Attorney General's office all except complaints about institutions in Kansas. Check with these agencies to see if the institution you are considering has formal complaints in progress. It is also a good idea to check with the Better Business Bureau.

### **Visit the Prospective School**

It is always a good idea to actually visit the school you are considering. There should not be any rush for you to sign an enrollment agreement on the spot. What you should get, however, is a catalog of courses, and a tour of the building where you will see equipment and facilities including library access at times you would need to be there. As you tour the classes, look for interaction between the instructor and the students, and the attitude of the students toward the activity they are doing. Look at the requirements of the program you are considering to see just how long it may take you to complete this program. Compare these to other institutions you visit in order to choose a school where you feel comfortable and learn as much as possible. Remember, you are investing in your future.

# The Owners of Options for Animals



Dr. Dennis  
Eschbach

Dr. Drew  
Spisak

Dr. Heidi  
Bockhold

[drdenniseschbach@aol.com](mailto:drdenniseschbach@aol.com) [Spisak@earthlink.net](mailto:Spisak@earthlink.net) [drheidi@bellsouth.net](mailto:drheidi@bellsouth.net)

***Owners of, and Principal Instructors for,  
Options for Animals  
College of Animal Chiropractic***

### From Options for Animals;

All of us at Options for Animals share a vision that animal chiropractic deserves a place in the animal health care system. We have made a commitment to study, research, teach and write so as to inspire future animal chiropractors. We proceed with precision for we know the foundations that we create will influence animal chiropractic care for generations of animals and humans to come.

Options for Animals College of Animal Chiropractic is committed to the continuing advancement of chiropractic as a health care choice for animals in the world community. We created and developed a new profession of animal health care, synthesized from the combination of our chiropractic and veterinary practices. Our ultimate goal is to relieve the pain and suffering of animals through the benefits of chiropractic care. The needs and desires of individual students, teachers or professions are always second to this goal.

We strive to bring the veterinary and chiropractic professions together for a common and higher goal. We understand that the profession of animal chiropractic requires the participation of both veterinarians and chiropractors in order to provide a more quality, complete and integrated approach to our animal patients' needs.

We promote the highest standard of care in animal chiropractic by offering the best in animal chiropractic education at our College of Animal Chiropractic. As this new knowledge enters established institutions around the world, we strive to continue being the 'Gold Standard' for animal chiropractic education. We are committed to continual evaluation and improvement of our educational format to reflect the changing needs of students in the world community. We continue to strive to achieve the highest level of recognition for our students whether by awarding certification, or academic degree.

We encourage our students to explore animal chiropractic with critical but open minds. Our students are encouraged to be creative in developing new chiropractic techniques, to expand existing knowledge through research and to share discoveries with the world. We support our students in developing inter-professional bonds in which individuals work together in respect and mutual support of animal chiropractic.

We understand that our time here is but brief, yet the ultimate truth in chiropractic is universal, enduring and significant.

*-- Dennis, Drew and Heidi --*

We at Options for Animals remember, understand, and appreciate the skills and wisdom of those that have worked with us. We continue to strive for the excellence that they have brought forward through the years. We will always maintain the highest standards in all our endeavors, and will pass on the torch when we feel we cannot. We humbly thank the following for their years of dedication and sacrifice for the betterment of animal health care. We apologize in advance for those we may have left off.

Dr. Sharon Willoughby-Blake  
*Veterinarian & Chiropractor*

Dr. Dennis Eschbach  
*Chiropractor*

Dr. Drew Spisak  
*Veterinarian*

Dr. Heidi Bockhold  
*Chiropractor*

Dr. Gary Marr  
*Chiropractor*

Dr. Susan Chandler  
*Chiropractor*

Dr. Michael Gleason  
*Chiropractor*

Dr. Sue Ann Lesser  
*Veterinarian*

Dr. Judith Shoemaker  
*Veterinarian*

## Our Original Founder

### Sharon Willoughby, DC, DVM

Dr. Willoughby grew up in Michigan, where she attended Michigan State University, graduating with a Bachelor of Science and as a Doctor of Veterinary Medicine in 1970. She worked in a private mixed-animal practice in Michigan for thirteen years. In 1983, her growing interest in animal chiropractic led her to attend Palmer College of Chiropractic in Davenport, Iowa. She graduated as a Doctor of Chiropractic in 1986.

Dr. Willoughby taught classes at Palmer College of Chiropractic in the School of Chiropractic Technology from 1986 to 1989. She taught Anatomy/Physiology, Physical Examination and Neurological Examination. In 1988 she became the Interim Director for the School of Chiropractic Technology. During this time she also practiced in an exclusive animal chiropractic practice. In 1989 she decided to pursue private practice in animal chiropractic fulltime.

Dr. Sharon L. Willoughby and a small group of her colleagues founded the American Veterinary Chiropractic Association (AVCA) in 1989. This was the first school of its kind, anywhere in the world. In 2000, she relinquished the AVCA to its current Board of Directors and renamed her school Options for Animals. Shortly after, she sold the school to four of its long time Board Members and instructors. Three of them own the school today and have developed its curriculum to the present day standards. Options for Animals has always been the gold standard for animal chiropractic education.

Dr. Willoughby authored Equine Chiropractic Care 1989, Sacropelvic Adjusting text 1992, Thoracolumbar Adjusting text 1992, Cervical Adjusting text 1992, and Extremity Adjusting text 1991. She co-authored a book, Healing Your Horse (MacMillan Press) 1993. She also contributed the chapter on chiropractic for Complementary and Alternative Veterinary Medicine (Mosby) 1998.

*Dr. Sharon Willoughby, circa 1994*



Dr. Willoughby passed away in the fall of 2010. She left her husband, Truman Blake and her son, Jason Jakubas. She has left a big hole in the world of animal chiropractic. We will miss her, and we thank her deeply for the contributions she gave us and the animal community that benefits from the gift of chiropractic.

Options for Animals College of Chiropractic is located 35 miles southwest of Kansas, City, Missouri. The largest metropolitan area in America's heartland, Kansas City straddles the border between two states—Kansas and Missouri. From its farming beginnings, contemporary Kansas City combines culture (visit the Kemper Museum of Contemporary Art and the Nelson-Atkins Museum of Art) with pioneer history at places like the Kansas City Museum.



Although Amtrak still pulls into **Union Station**, the facility is now known more for its museums, restaurants, and shops. At the station's KC Rail Experience, walk through a vintage railroad dining car, see a model train chugging through over 1,000 square feet of miniature terrain, and hear the stories of railroad ghosts. **Science City**, another Union Station fixture, features 50 interactive exhibits. Kids can ride a bike 30 feet in the air, time their baseball pitches, and talk to a paleontologist at work in the Dino Lab.

At the **American Jazz Museum**, learn about music legends such as Ella Fitzgerald and Louis Armstrong and experiment with harmony, melody, and rhythm at a mock studio. The **Negro Leagues Baseball Museum** traces the heroes and hardships of the baseball players of the Negro Leagues through film, memorabilia, and interactive computer stations.

Wilder folks who crave amusement-park thrills should head to **Worlds of Fun** for its 50 rides, including a fast, inverted roller coaster. To cool you off, splash at the park's **Oceans of Fun**, billed as the largest water park in the Midwest, with slides, wave pools, waterfalls, and lazy rivers. The shoppers can visit **Crown Plaza**.

On the Kansas side of KC, take little ones to Overland Park's **Deanna Rose Children's Farmstead** to feed the animals, go on a hayride, and do crafts in a one-room schoolhouse. The 12-acre park is open April 1 through October 31.



Find out about frontier history at **Fort Osage**, overlooking the Missouri River in Sibley, about 50 minutes away. Independence, Missouri, 15 minutes from Kansas City, was the starting point for thousands of later pioneers as they started their westward journeys. Ride in a covered wagon with **Pioneer Trails Adventures** and learn more about the westbound settlers' lives at the **National Frontier Trails Museum**. Independence also was the home of the 33rd President of the United States, Harry S. Truman. Along with his papers, the **Truman Presidential Museum and Library** has a replica of his office in the White House.





## One of a Kind Campus

The College was established in Port Byron, Illinois in 1988 as the first animal chiropractic school in the world. In 2005, the College moved to its newly built campus in Wellsville, Kansas and again, it was a first. It is the only campus in the world built exclusively for educating Chiropractors and Veterinarians Integrative Animal Health Care, specifically, the art, science and philosophy of Animal Chiropractic. Over 2000 chiropractic and veterinary professionals have attended the College, with graduates in 28 countries on six continents. Its curriculum remains the most studied and best attended in the world.

## Our Strengths

Our College of Animal Chiropractic has some unique advantages compared to most other schools that teach Animal Chiropractic. Our ultimate goal is to relieve the pain and suffering of animals through chiropractic care. We realize those goals by teaching veterinarians and chiropractors the most current and up to date information and research while using the most modern and advanced educational methods available. Our unique, clinically based curriculum is taught by faculty members that still run their own animal chiropractic practices. This ensures that our students get the knowledge they need from teachers that are truly passionate about their work and prepares them to graduate well prepared for a career in animal chiropractic.

In keeping with those high standards, our Essentials in Animal Chiropractic Course is the only one of its kind approved by the Kansas Board of Regents, the American Veterinary Chiropractic Association (AVCA) and the International Veterinary Chiropractic Association (IVCA). Our faculty is also unique in that all of our instructors are certified by either one or both of these agencies. The college is also recognized by the AVMA and licensed in the state of Kansas as a teaching hospital.

**“You First”** At our College, we believe in putting the student’s needs first, whenever possible. We know the world doesn’t revolve around you. But at least for your brief time with us, we’ll do what we can to make you feel like it does.





We strive to provide an unexpectedly extraordinary experience for our students every day. It's all part of our "You First" service philosophy – a commitment to doing whatever it takes to make your time with us a memorable one.

That's why we start each day with a smile accompanied by a nutritious and delicious continental breakfast – never compromising quality. Never. We work hard throughout the day, but generous breaks are used to converse, relax, and again enjoy delicious snacks. With hard work, we think you deserve enthusiastic play. Many evenings are spent enjoying each other as we participate in dinners, bonfires and a variety of activities. Many students attend rodeos, go dancing, shopping or maybe a visit to the museums or jazz clubs in Kansas City. And don't forget the family. There are many attractions the family can attend during the day including zoos and amusement parks.

**“If We Can, We Will”** We take pride in meeting the special needs of our students whenever possible:

- ☺ We provide numerous scheduling possibilities to fit your busy schedules,
- ☺ We provide a lifetime of follow-up communication with our students including regular College newsletters and correspondences, and
- ☺ We provide a section of our website for the general public including a referral site for our graduates.

## Features of Our College

Options for Animals College of Animal Chiropractic is a self standing, fully self contained building with climate controlled barn, kennel and arena, two large classrooms, an osteological specimen room equipped for dissection and specimen preparation, a library and study center, a bookstore, and a functioning clinic.

Many of our faculty are involved in research, including the recent collaboration of the International Academy for Veterinary Chiropractic in Germany and the University of Utrecht in the Netherlands on their research in the use of chiropractic in the improvement of equine gait.



All of our instructors are encouraged to complete continuing education so that they can keep their lectures and laboratories as up to date as possible.



## Affiliate Campuses

Options for Animals has graduates of its programs in 28 countries on 6 continents. Due to the increased demand of our programs overseas, Options went international in 2003. We are now proud partners with the International Academy for Veterinary Chiropractic with campuses in Sittensen, Germany and at the Anglo-European College of Chiropractic in Bournemouth, England. This affiliation has been very successful, broadening the opportunities for our students to attend from all parts of the world.

All courses, at all locations, are taught in English, with simultaneous interpretation into German at the German school. Students have the opportunity to attend any course or module at any location, thus broadening the chance that we can meet the needs of your schedule and affording the opportunity for travel.



### IAVC-DE (Germany)



Located in Sittensen, Germany, a small, scenic, agriculturally based town in central, northern Germany, the IAVC facility offers an ideal location for continuing education for professionals. Major airports in Hamburg, Bremen, Hanover and Lübeck are all within 1.5 hours driving distance, and with an excellent 'autobahn' (motorway) and train connections, students from all over Europe and beyond have easily found their way to Sittensen.



### IAVC-UK (England)



The newest location for the IAVC and the Options for Animals Basic Animal Chiropractic course is in Bournemouth, England. We are very excited and honored to have our program taught at the prestigious Anglo-European College of Chiropractic. Located in the beautiful, seaside town of Bournemouth, it is a sought after holiday destination. Several nearby airports,

trains and the motorway make it an easy access.



ANGLO-EUROPEAN  
COLLEGE OF CHIROPRACTIC



# ANIMAL CHIROPRACTIC

## INTRODUCTION

Chiropractic colleges need to make a concerted effort to research and develop instructional methodologies that foster consistent terminology and...outcomes. In an effort to promote this atmosphere, many of the following excerpts are from the Association of Chiropractic College's (ACC) Chiropractic Paradigm. The ACC is committed to affirming the chiropractic profession by addressing issues facing chiropractic education.

### What is Animal Chiropractic?

Chiropractic is an integral part of the holistic trend in animal health care. A holistic philosophy stresses the integration of all the external and internal influences on the organism in the study of health and disease. Holistic therapies are designed to intervene at the appropriate level and to work with, not against, the inborn homeostasis of the organism. This differs from pure allopathic philosophy that targets specific symptoms and pathologies, often separating and isolating those symptoms from the entire health paradigm of the patient.

Chiropractic offers tremendous potential in animal health care. It belongs in the health care spectrum along with medicine, surgery, acupuncture, homeopathy and other such modalities. Chiropractic care does not pretend to encompass the entire study of health and disease, but it does offer alternative explanations for disease and provides complementary therapy. The foundations of chiropractic philosophy are based on the intimate relationship of the spinal column to the nervous system, as well as the role of the spinal column in biomechanics and movement.



*"Health is the state about which  
medicine has nothing to say."  
- W.H. Auden*

The Postgraduate Animal Chiropractic Courses offered by Options for Animals were the first of their kind in the world. All other programs that now exist were developed from those programs. Most of the knowledge used to cultivate the first program was extrapolated from the human chiropractic profession. Both functional theories and techniques were used to explain and obtain clinical results. The last twenty years have demonstrated the tremendous benefit that animals receive from the integration of animal chiropractic into the veterinary clinical practice.

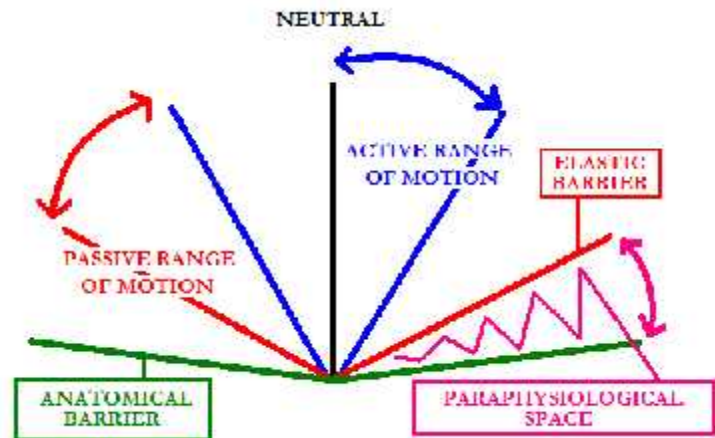
## Chiropractic Is ...

The ACC Position on Chiropractic:

-- Chiropractic is a health care discipline that emphasizes the inherent recuperative power of the body to heal itself without the use of drugs or surgery.

The practice of chiropractic focuses on the relationship between structure (primarily the spine) and function (as coordinated by the nervous system) and how that relationship affects the preservation and restoration of health. In addition, Doctors of Chiropractic recognize the value and responsibility of working in cooperation with other healthcare practitioners when in the best interest of the patient.

The Association of Chiropractic Colleges continues to foster a unique, distinct chiropractic profession that serves as a health care discipline for all. The ACC advocates a profession that generates, develops, and uses the highest level of evidence possible in the provision of effective, prudent, and cost-conscious patient evaluation and care.



The ACC Chiropractic Paradigm:

-- The purpose of chiropractic is to optimize health. The principle that guides this is the body's innate recuperative power which is affected by and integrated through the nervous system.

The practice of chiropractic includes the establishment of a [chiropractic] diagnosis, the facilitation of neurological and biomechanical integrity through appropriate chiropractic case management, and the promotion of health.

The foundation this is built on includes philosophy, science, art, knowledge, and clinical experience.

The chiropractic paradigm directly influences education, research, health care policy and research, relationships with other health care providers, professional stature, public awareness and perceptions, and patient health through quality care.

## Animal Chiropractors Treat...

### ...Vertebral Subluxation Complexes (VSC).

#### *The ACC Definition of Subluxation:*

-- Chiropractic is concerned with the preservation and restoration of health and focuses particular attention on the vertebral subluxation complex (VSC).

A vertebral subluxation complex is a multifaceted condition of functional and/or structural pathological articular changes that compromise neural integrity and may influence organ system function and general health.



A vertebral subluxation complex is evaluated, diagnosed, and managed through the use of chiropractic procedures based on the best available rational and empirical evidence.

The American Chiropractic Association (ACA) defines a VSC “as an aberrant relationship between two adjacent articular structures that may have functional or pathology sequence, causing an alteration in the biomechanical and/or neurophysiological reflections of these articular structures, their proximal structures and/or body systems that may be directly or indirectly affected by them.”



## The VSC is Treated By...

...the Animal Chiropractor utilizing an **Adjustment**. An adjustment is defined as a very specific, short lever, high velocity, controlled thrust, by hand or instrument, that is directed at specific articulations to correct vertebral subluxation complexes and/or other subluxation complexes throughout the body.



## Animal Chiropractic Does Not...

...include the dispensing or recommendations for dispensing medications, performance of surgery, injections of medications or the replacement of necessary traditional veterinary care. Animal Chiropractic is integrated with concurrent veterinary primary care.



## Protocol of Animal Chiropractic

The treatment procedures utilized in Animal Chiropractic include the adjustment of vertebrae, the adjustment of the extremities and the adjustment of cranial sutures. Animal chiropractic care also includes management advice as to what is needed to insure proper response to chiropractic care.

The practice of Animal Chiropractic includes taking a thorough case history, consisting of at least, subjective information from the owner, information previously determined from examinations radiographs or laboratory analysis, and information as to previous diagnoses and therapies.

Animal Chiropractic includes an examination of the animal patient prior to spinal, extremity or cranial adjustments. The examinations performed include, but are not limited to: posture analysis, gait analysis, vertebral, extremity and cranial static palpation, vertebral and extremity motion palpation, short leg analysis, orthopedic evaluation and neurological evaluation.

The information from the case history and examination are combined to determine a working diagnosis. The Animal Chiropractor must decide what course of action to proceed with, including adjusting vertebral subluxation complexes, adjusting subluxation complexes in the extremities, and/or referring the patient back to his primary care veterinarian for further examination or care. This procedure of triage is called “gate-keeping.”

Gate-keepers are simply doctors that provide a “portal of entry” for the patient at which time the patient is triaged and decisions are made as to which doctors might best treat the conditions of a patient at any particular time.

**The animal patient MUST always have concurrent care by a primary care veterinarian.**



# The Essentials in Animal Chiropractic Course

The Postgraduate Essentials in Animal Chiropractic Course is designed as continuing education for chiropractors and veterinarians. The curriculum meets the standard of education put forth by the American Veterinary Chiropractic Association (AVCA) and the International Veterinary Chiropractic Association (IVCA). Its purpose is to provide exceptional education in Animal Chiropractic to ensure that its graduates can practice with the highest Standard of Care.

The course consists of classroom and home study. Classroom study consists of a minimum of 210 hours of lecture and laboratory. Classroom instruction is offered in a modular format, consisting of five modules, with each module consisting of four and a half days. The modules can be taken in several formats (see Academic Calendar, p. 24), completing them in anywhere from four weeks to two years. Home study is required with the average student spending at least eight to ten hours to complete home assignments after each module. All class and home study progress is monitored by written and practical examinations.

Upon successful completion of the course a certificate of attendance will be issued by the College. This certificate enables the student to register for additional clinical competency examination by both the AVCA and IVCA and to register as qualified animal chiropractors in states such as Oklahoma and Minnesota. (Additional information can be obtained at their websites: AVCA – [www.animalchiropractic.org](http://www.animalchiropractic.org) and the IVCA – [www.I-V-C-A.com](http://www.I-V-C-A.com) .)

## Policy Changes

The provisions of this Catalog should not be construed by the applicants or students as an irrevocable contract. The College reserves the right to effect policy and regulatory changes at any time. Moreover, the College does not assume a responsibility for giving advance notice made in policies, criteria or rule.

## Licensure Requirements

Options for Animals College of Animal Chiropractic makes every reasonable effort to qualify students to sit for all licensing, certification and/or clinical competency examinations, but makes no assurance that any graduate will be qualified to take these examinations or pass any of these examinations.

State, Provincial, and governmental laws and Boards of Examiners administrative rules and regulations experience periodic changes; therefore each candidate desiring to pursue the professional program offered by the College is responsible to ascertain all information relative to his or her qualifications to practice in any jurisdiction that he or she selects.

## Transfer of Credit

At this time, Options for Animals does not accept transfer of credits from other institutions.

## Eligibility

An applicant must be a Chiropractor or Veterinarian; or, a Chiropractic or Veterinary Student in their last Semester/Trimester of study. The Applicant must be in good standing in the areas in which he/she practices and with his/her professional associations.

### **Students from the United States**

Chiropractors and Veterinarians from the United States must have received their degrees from a school approved by the Committee on Chiropractic Education (CCE) or the American Veterinary Medical Association (AVMA).

### **Foreign Students**

Chiropractors and Veterinarians from outside the United States must have graduated from schools accepted by their countries. (i.e. Chiropractors from the England must be from schools approved by the General Chiropractic Council (GCC).

## Application Process

All professionals interested in the College of Animal Chiropractic should obtain an enrollment application by writing to the College Registration Department at Options for Animals, PO Box 3682, Cartersville, GA 30120, USA; by calling the office at +1 309 658 2920; by emailing the office at [Options4Animals@aol.com](mailto:Options4Animals@aol.com); by using the application in this catalog; or, by applying on-line at [www.animalchiro.com](http://www.animalchiro.com).

The enrollment application is intended for the Options for Animals College of Animal Chiropractic's Essentials in Animal Chiropractic Course. If taken consecutively, the course consists of five (5), four and one half (4½) day sessions, spread over a period of between 5 weeks to 10 months, depending on which schedule is chosen.

At these sessions, the student will receive written notes and a minimum of 135 Hours of Lecture and a minimum of 75 Hours of Hands-On Laboratory Time. The student will be assigned to a faculty advisor that will personally coach the student throughout the course and for up to three months after the completion of the course. Coaching beyond this time period is available for an additional fee.

After successful completion of the course, the student will receive a certificate of completion. Options for Animals makes no guarantee as to career placement or career opportunities for any of its students that complete the course. The completion certificate does allow the student to attain further certification by the American Veterinary Chiropractic Association (AVCA; [www.animalchiropractic.org](http://www.animalchiropractic.org); 918-784-2231) and/or the International Veterinary Chiropractic Association (IVCA; [www.i-v-c-a.com](http://www.i-v-c-a.com)). These certification examinations do include a separate fee. Please contact the associations directly for more information on these certifications and their fees and requirements.

**With the signed and completed enrollment application, the applicant must include:**

1. A copy of his/her license, diploma, or supporting documents as described in this Course Catalog (Students please include a copy of your professional school transcript).
2. Payment. (Minimum \$350.00 USD Deposit as described below.)

## Payment Options (Effective September 1, 2011.)

1. **Payment in full is preferred and is discounted.** Total for the 5 Modules is \$5,750.00 USD. Full payment is due no sooner than thirty (30) days before the start of the first module and no later than the end of the first module. (Applications after 9/1/2012 will be \$5,975.00 USD.)
2. **Standard Payment plan:** Consists of three payments of \$2,000.00 USD. The first payment is due no later than the end of the first module. Payments two and three are due no later than the end of modules two and three. Total payments for tuition is \$6000.00 USD. (Applications after 9/1/2012 will be 3 payments of \$2,075.00 USD totaling \$6,225.00 USD.)

A student can terminate his/her application at any time; can withdraw from the course at any time; and the College can terminate a student's enrollment for insufficient progress, non-payment, or failure to comply with all rules as stated in the Course Catalog. Refund of all monies due the student will be made within 60 days of termination and will be determined by strict guidelines as regulated by K.S.A. 88-22-2 and as described in this Course Catalog.

## Fees and Expenses

### Tuition

Tuition for the Essentials in Animal Chiropractic Course is between Fifty Seven Hundred and fifty United States Dollars (\$5,750.00 USD) and Six Thousand United States Dollars (\$6,000.00 USD). (After 9/1/2012 between \$5,925.00 USD and \$6,225.00 USD.) The difference is dependent on your option for payment. In addition, there is a required list of books that will cost no more than Five Hundred United States Dollars (\$500.00 USD). Also, an ELECTIVE course in Clinical Mentoring (Additional 40 Hours) may be available for an additional fee. Details of the Clinical Mentoring Course will be discussed during the first module attended by the applicant.)

## Other Fees

In addition, there is a required list of text books and/or other materials that will cost no more than Five Hundred United States Dollars (\$500.00 USD).

## Deposits

### Deposit to Hold a Seat:

Sessions often fill quickly. You are placed on the roster when a completed application and the deposit fee or tuition is received at the Options for Animal's office. If a group of modules is already filled, you will be notified and have the choice to be placed on a waiting list, have your application processed for the next most convenient session or have your application returned and all monies refunded.

The minimum DEPOSIT FEE to hold a seat is \$350.00 USD. Please remit the Deposit fee with this enrollment form if application is made more than thirty (30) days before the start of the first module. If you fail to enter the course, for any reason (except a full course as described above), all monies paid will be refunded within 60 days of withdrawal, less a non-refundable application fee of \$150.00 USD.

**DO NOT MAKE TRAVEL ARRANGEMENTS** until you have written confirmation from Options on your placement and status. We cannot guarantee that you can attend if placed on a waiting list.

## Refund of Academic Fees

Students leaving the College may receive a refund of fees. Subject to certain exceptions and because of the nature of the curriculum, refunds will be calculated after the Registration Department receives a written request from the student. Fee refunds are paid in accordance with the following schedule:

The student will receive a full refund of all money paid (minus the application fee of \$150.00 USD) if the student cancels within the first two days of the first module of the program.

A student who withdraws or is dismissed after attending at least one class, but before completing 60% of the program in the current enrollment period, is entitled to a pro rata refund as follows:

PERCENTAGE OF COURSE COMPLETED		REFUND OF TUITION
AT LEAST	BUT LESS THAN	
	10% .....	90%
10%	20% .....	80%
20%	30% .....	70%
30%	40% .....	60%
40%	50% .....	50%
50%	60% .....	40%
60%	.....	NO REFUND

As part of this policy, the College may retain a onetime application fee of no more than \$150.00 USD. The College will make every effort to refund prepaid amounts for books, supplies and other charges, as long as they have been returned in good condition. A student will receive the refund within 40 working days of termination date. If a student withdraws after completing 60% of the instruction, the school may refund a pro rata amount; if withdrawal is due to mitigating circumstances beyond the student's control.

## Code of Ethics

### Code of Ethics (Honor Code)

Honesty is an essential part of professionalism. The Code of Ethics places the responsibility for honor and honesty on the student.

Written examinations are not strictly proctored by faculty members. Teaching aides and equipment used in the classroom and laboratories are made available for instruction with the understanding that the doctors in the class will treat them with respect and only use them for their intended purposes without being policed by the faculty members.

The code applies to all students and instructors of the College and helps to promote ethical standards of personal and professional conduct. Reports of violations of this code will be investigated promptly and thoroughly, and every precaution is taken to arrive at a just decision. Anyone found guilty of violating the code may be dismissed from the College. Anyone unwilling to accept the code should not apply to the College.

## Rules of Conduct

Options for Animals College of Animal Chiropractic strives to make the learning and work environment as safe as possible. To that end, the College does not tolerate actual or threatened violence on its premises or directed to a College staff member, faculty member, student, guest or visitor, on or off the premises. Verbal or written threats of any kind, even in jest, will not be tolerated and may result in disciplinary action up to and including termination, expulsion, or removal from the premises pending investigation.

### Drug Free College Campus

The possession, use, distribution or sale of narcotics or drugs, other than those medically prescribed, properly used and in the original container, by students, faculty, staff or visitors on College property or while on College business is prohibited.

The College's policy regarding use of alcohol is consistent with local, state, and federal laws and regulations. The alcohol use policy focuses on the responsible use of alcohol at all Options for Animals events.

### Concealed Weapons Policy

Firearms, concealed weapons and/or explosives are not allowed at any time on property owned by the College.

# Academic Calendar

## “You First Approach”

At Options for Animals we take a “You First Approach”. Our schedules vary in time, location and length of program giving you more choices to fit our courses into your busy schedules. All courses are taught in English (Most courses in Germany are taught with simultaneous interpretation into German.), and the curriculum is the same at all locations. This allows a student to begin a program in one site while attending some of the required modules at other locations as needed. (If using this option, please inquire as to tuition prices as they may differ at various campuses.)



The Essentials in Animal Chiropractic Course must be completed in two (2) years. This option gives the student a chance to begin in one set of modules but continue in other sets as needed to fit their schedule. The modules must be taken in order, and the first four modules must be completed before attending the fifth and final module which includes final examinations.

These options are also in effect for all continuing education / continuing professional development courses.

Following are the schedules for all locations. Please note that these dates may occasionally change due to situations beyond our control. Always check our website at [www.animalchiro.com](http://www.animalchiro.com) or call the office at +1-309-658-2920 to verify times and locations.



**DATES MAY CHANGE PERIODICALLY!! PLEASE REFER TO OUR WEBSITE, SCHEDULES PAGE, OR CALL FOR THE MOST CURRENT DATES.**

## College of Animal Chiropractic Main Campus in Wellsville, KS

### (Basic) Essentials in Animal Chiropractic Course

**2012 – 2014**

<b>Course Start/End Date</b>	<b>10/5/11 – 2/18/12</b>	<b>3/14/12 – 8/25/12</b>	<b>7/25/12 – 8/25/12</b>	<b>10/10/12 – 2/9/13</b>	<b>3/20/13 – 8/31/13</b>
<b>Course Duration</b>	<b>(6 Months)</b>	<b>(6 Months)</b>	<b>(5 Weeks)</b>	<b>(6 Month)</b>	<b>(6 Months)</b>
<b>Sacropelvic</b>	10/5 – 9/11	3/14 – 18/12	7/25 – 29/12	10/10 – 14/12	3/20 – 24/13
<b>Thoracolumbar</b>	11/2 – 6/11	4/25 – 29/12	8/1 – 54/12	11/7 – 11/12	4/24 – 28/13
<b>Cervical</b>	12/7 – 11/11	6/6 – 10/12	8/8 – 12/12	12/5 – 9/12	5/29 – 6/2/13
<b>Extremity</b>	1/11 – 15/12	7/11 – 15/12	8/15 – 19/12	1/9 – 13/13	7/10 – 14/13
<b>Integrated</b>	2/15 – 18/12	8/22 – 25/12	8/22 – 25/12	2/6 – 9/13	8/28 – 31/13

<b>Course Start/End Date</b>	<b>7/31/13 – 8/31/13</b>	<b>10/2/13 – 2/8/14</b>	<b>3/26/14 – 8/30/14</b>	<b>7/30/14 – 8/30/14</b>	<b>10/8/14 – 2/10/15</b>
<b>Course Duration</b>	<b>(5 Weeks)</b>	<b>(6 Months)</b>	<b>(6 Months)</b>	<b>(5 Weeks)</b>	<b>(6 Month)</b>
<b>Sacropelvic</b>	7/31 – 8/4/13	10/2 – 6/13	3/26 – 30/14	7/30 – 8/3/14	10/8 – 12/14
<b>Thoracolumbar</b>	8/7 – 11/13	11/13 – 17/13	5/7 – 11/14	8/6 – 10/14	11/12 – 16/14
<b>Cervical</b>	8/14 – 18/13	12/11 – 15/13	6/11 – 15/14	8/13 – 17/14	12/10 – 14/14
<b>Extremity</b>	8/21 – 25/13	1/8 – 12/14	7/16 – 20/14	8/20 – 24/14	2015
<b>Integrated</b>	8/28 – 31/13	2/5 – 8/14	8/27 – 30/14	8/27 – 30/14	2015

## IAVC-DE Sittensen, Germany

### (Basic) Essentials in Animal Chiropractic Course

**2012 - 2014**

<b>Course Start/End Date</b>	<b>4/18/12 – 9/9/12</b>	<b>10/24/12 – 4/13/13</b>	<b>4/3/13 – 9/15/13</b>	<b>10/23/13 – 6/14/14</b>	<b>4/23/14 – 9/14/14</b>
<b>Course Duration</b>	<b>(6 Months)</b>	<b>(6 Months)</b>	<b>(6 Months)</b>	<b>(6 Months)</b>	<b>(6 Months)</b>
<b>Sacropelvic</b>	4/18 – 22/12	10/24 – 28/12	4/3 – 7/13	10/23 – 27/13	4/23 – 27/14
<b>Thoracolumbar</b>	5/23 – 27/12	11/28 - 12/2/12	5/8 – 12/13	12/4 - 8/13	5/28 – 6/1/14
<b>Cervical</b>	6/27 – 7/1/12	1/16 – 20/13	6/19 – 23/13	1/15 – 19/14	6/25 – 29/14
<b>Extremity</b>	8/1 – 5/12	2/20 – 24/13	8/7 – 11/13	2/19 – 23/14	7/23 – 27/14
<b>Integrated</b>	9/5 – 9/12	4/10 – 14/13	9/11 – 15/13	4/2 – 6/14	9/10 – 14/14

## IAVC-UK Bournemouth, England

### (Basic) Essentials in Animal Chiropractic Course

**2012 - 2014**

<b>Course Start/End Date</b>	<b>4/18/12 – 9/9/12</b>	<b>5/1/13 – 10/13/13</b>	<b>4/30/14 – 9/21/14</b>
<b>Course Duration</b>	<b>(6 Months)</b>	<b>(6 Months)</b>	<b>(6 Months)</b>
<b>Sacropelvic</b>	4/11 – 15/12	5/1 – 5/13	4/30 – 5/4/14
<b>Thoracolumbar</b>	5/16 – 20/12	6/12 – 16/13	6/4 – 8/14
<b>Cervical</b>	6/20 – 24/12	7/24 – 28/13	7/9 – 13/14
<b>Extremity</b>	7/18 – 22/12	9/4 – 8/13	8/13 – 17/14
<b>Integrated</b>	8/29 – 9/2/12	10/9 – 13/13	9/17 – 21/14

## The Postgraduate Essentials in Animal Chiropractic Course Curriculum

The curriculum of the Basic Animal Chiropractic Course is composed of at least 210 hours of education consisting of a minimum of 75 hours of hands-on laboratories and a minimum of 135 hours of lecture. Following is a brief description of these classes (Times are estimates, as some classes of students require more time to complete the required studies, and some require less.):

### Anatomy and Biomechanics

**Comparative Anatomy** – 8 hours – All pertinent aspects comparing equine, bovine, canine, feline and human osteology, myology and syndesmology will be discussed. Fully articulated skeletal models of the horse and dog, equine and canine spine models, as well as hundreds of individual bones and models are available for use in these classes.



**Neuroanatomy and Physiology** – 5 hours – The basic cellular and physiological processes of the neuron and nervous system will be discussed. Topics include cellular neuroanatomy and physiology, the brachial plexus, the lumbosacral plexus, the autonomic nervous system and the cranial nerves.



**Topographical Laboratory** – 6 hours – All students will statically palpate and locate all pertinent anatomical landmarks on the equine and canine.

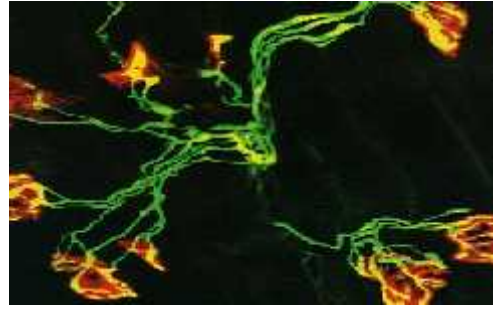
**Dissection Laboratory** – 8 hours – Students will investigate and study pertinent comparative anatomical structures by dissection and by examining previously dissected specimens.

**Basic Spinal and Extremity Biomechanics** – 4 hours – Normal movement and joint mechanics in each motion unit of the body will be discussed in order that the student is able to analyze normal versus compensatory movement.

**Advanced Biomechanics** – 3 hours – Equine and canine gait analysis including topics such normal gaits, abnormal gaits and conformational faults and gait.

## Applied Functional Neurology

**Applied Functional Neurology** – 7 hours – These lectures explore the functional aspects of the nervous system as it applies to animal chiropractic diagnosis and treatment. Topics include the evolution of joint injury, mechanoreceptors and proprioception, spinal reflexes and cord level reactions, suprasegmental control, and nociception as well as lectures that put it all together.



## Animal Chiropractic Diagnosis

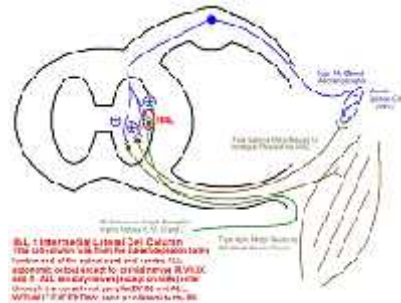


### **Differential Diagnosis of Large and Small Animal Neuromusculoskeletal Conditions** – 4 hours –

These lectures emphasize an integrated diagnosis of the entire patient using diagnostic resources of signalment, history and consultation, posture analysis, static palpation (osseous, muscle, temperature, coat changes, etc.) motion palpation and gait analysis. Emphasis is placed on how these diagnoses relate and integrate into the primary health care of the animal.

**Motion Palpation Laboratory** – 8 hours – These laboratories assist the student in developing their 'feel' for the normal versus abnormal movement in motion units. Motion palpation is carried out on small and large animal as well as each other.

**Diagnostic Imaging** – 4 hours – Plain film radiography, digital radiography, myelography, fluoroscopy and magnetic resonance imaging are discussed and evaluated for normal and abnormal findings.



**Neurological Examination** – 2 hours – This lecture explores the traditional equine and canine neurological examination including live and video demonstration.

## Animal Chiropractic Adjusting Techniques

**General Principles of Animal Chiropractic Adjusting** – 4 hours – Certain factors increase the efficiency, safety, reliability and comfort of the doctor and patient during the chiropractic adjustment. These factors are discussed and demonstrated.

**General Principles of Animal Chiropractic Adjusting Laboratory** – 8 hours – Students will learn and fine tune, through hands on laboratories, the principles learned above. Topics such as doctor hand and body positions, contact points, safety and handling, use of speeder boards and intricacies of the chiropractic adjusting thrust will be practiced.



**Basic Animal Chiropractic Adjusting Techniques** – 16 hours – Specific animal chiropractic treatment techniques will be discussed and demonstrated. Areas included are sacropelvic, thoracolumbar, cervical, front limb, rear limb, ribs, TMJ, tail and cranium.

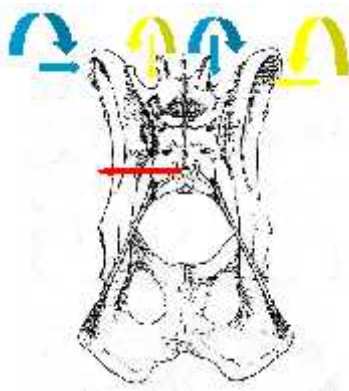
**Basic Animal Chiropractic Adjusting Techniques Laboratory** – 20 hours – Individual hands-on instruction in all adjusting techniques above are practiced on the horse and dog.

**Review of Basic Animal Chiropractic Adjusting Techniques** – 7 hours – All basic animal chiropractic adjusting techniques are reviewed.

**Review of Basic Animal Chiropractic Adjusting Techniques Laboratory** – 13 hours – All adjusting techniques taught the module before are reviewed and individual hands-on instruction is utilized for the second time on each technique. This individual hands-on teaching occurs a third time during the integrated module as a review before the final examinations.



**Open Question and Answer Technique Laboratory** – 4 hours – Students are given a chance to ask any questions they may have while in a laboratory setting so that demonstration on the animal is possible.



**Comparative Animal Chiropractic Techniques Lecture and Laboratory** – 4 hours – At least four different animal chiropractic adjusting techniques are demonstrated and the students are encouraged to ask questions about each. This gives the student exposure to other methods and affords them the opportunity to seek further education in those techniques if desired.

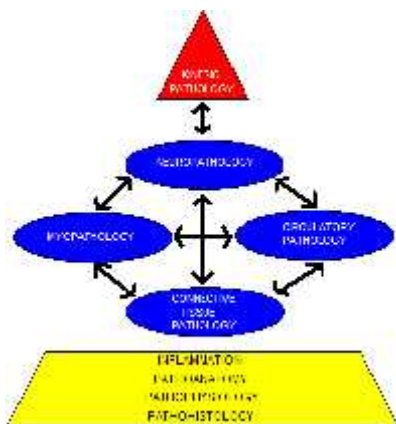
**Rehabilitation** – 2 hours – This lecture offers a basic review of several muscle, exercise and rehabilitative techniques.

## Management of the Animal Chiropractic Patient

**Basic Case Management** – 7 hours – These lectures address some of the common topics in everyday case management including, the lay lecture, introduction to leads and collars, introduction to saddle and harness fit, equine teeth and bits and the equine foot.

**Integrated Case Management** – 6.5 hours – (All of the following are addressed by lecture, in small group discussion and/or with expert panel debate through an open question forum.) Review of the chiropractic theories and the contemporary vertebral subluxation complex; define assess and apply animal chiropractic diagnosis of the vertebral subluxation complex; and, investigate the creation and application of appropriate clinical goals and applying them to our integrative treatment protocols.

## Chiropractic Sciences



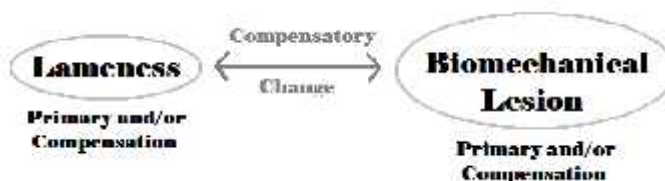
**Basic Chiropractic Theories and Tenets** – 16 hours – Fundamental chiropractic topics are discussed including terminology and listing systems, history of chiropractic, vertebral subluxation complex 1 - chiropractic theories, and vertebral subluxation complex 2 - exploring the contemporary VSC.

**Chiropractic Pathology** – 4 hours – Pertinent chiropractic pathologies and how adjusting techniques as well as integrative modalities can influence treatment of those pathologies.

## Veterinary Sciences

**Basic Veterinary Theories and Tenets** – 16 hours – Fundamental veterinary topics are discussed including safety and handling, physiology and pharmacology, zoonotic and metabolic conditions and lameness including demonstration of the lameness exam.

**Veterinary Pathology** – 4 hours – Pertinent large and small animal pathologies are discussed as well as their implications in complimentary chiropractic care. Discussion on how chiropractic and other integrative modalities can influence treatment of those pathologies.



## History and Philosophy of Animal Chiropractic



**Animal Chiropractic History** – 1 hour – This lecture explores the modern history of animal chiropractic.

**Philosophy** – 4 hours – Here we explore the philosophy behind the chiropractic approach to health care and how it influences the practice philosophies of the animal chiropractor.

**Introduction to the Vertebral Subluxation Complex** – 1 hour – This lecture provides the student of an overview of the vertebral subluxation complex so that he can relate to the chiropractic topics at an early stage in the course.

## Ethics and Legalities

**Ethics and Legalities** – 4 hours – The ethical and legal implications of chiropractors and veterinarians practicing animal chiropractic are discussed. Emphasis is placed on the primary care of the patient by a veterinarian as well as the integrative team approach to animal chiropractic.

## Current Research

**Current Research** – 4 hours – Pertinent current research topics are discussed. Students are expected to read a certain number of current research articles each module.

## Examinations

**Written Examinations** – 5 hours – Students are tested each module on material covered in the previous modules. A final examination is taken on the last day of classes.

**Practical Examinations** – 6 hours – Students are tested on their application of the basic animal chiropractic adjusting techniques taught at the previous module. A final examination is taken on the last day of classes.

## Homework

**Case Reports** – At the beginning of each of the second through fifth modules each student is to hand in home study reports. These reports should detail all aspects of an animal chiropractic case that they are managing at home.

**Text Book Reading Assignments** – Each module the students are given reading assignments from required texts. These readings are required and tested for on the next examinations.

## Academic Review During the Course

At the beginning of each of the second through fifth modules the students will undertake a written and practical examination. Academic achievement will be monitored by this process. Each student will be required to maintain marks greater than 75% in two tracts; one, the written exams and homework, and two, the practical exams. A student may be placed on academic probation if their marks fall below 75%, and continued low marks could be grounds for academic dismissal from the program.

## Attendance

Attendance to all lectures and laboratories is mandatory. Emergency absences will have to be made up. How and when the hours missed will be made up will be determined on a case by case basis.

# Enrollment Application



## Options For Animals COLLEGE OF ANIMAL CHIROPRACTIC

PO Box 3682  
Cartersville, GA 30120 USA

+1 309-658-2920

Options4Animals@aol.com www.animalchiro.com

### Application for Attendance in the Post-Graduate Essentials in Animal Chiropractic Course

***(Please print legibly. This application constitutes an enrollment agreement and is deemed a Contractual relationship between the applicant and Options for Animals As regulated by K.S.A 74-32, 162-183 and K.S.A 88-23-2a.)***

Application for the Course with the SacroPelvic Module Beginning: (mo) \_\_ / (yr) \_\_\_\_\_

This application is for the Options for Animals College of Animal Chiropractic's Essentials in Animal Chiropractic Course. If taken consecutively, the course consists of five (5), four and one half (4½) day sessions, spread over a period of five to six (5-6) months. Beginning May, 2008, lunch, Wednesday through Saturday, and one evening meal will be provided by the College.

At these sessions, the student will receive written notes and a minimum of 135 Hours of Lecture and a minimum of 75 Hours of Hands-On Laboratory Time. The student will be assigned to a faculty advisor that will personally coach the student throughout the course and for up to three months after the completion of the course. Coaching beyond this time period is available for an additional fee.

After successful completion of the course, the student will receive a certificate of completion. Options for Animals makes no guarantee as to career placement or career opportunities for any of its students that complete the course. The completion certificate does allow the student to attain further certification by the American Veterinary Chiropractic Association (AVCA; www.animalchiropractic.org; 918-784-2231) and/or the International Veterinary Chiropractic Association (IVCA; www.i-v-c-a.com). These certification examinations do include a separate fee. Please contact the associations directly for more information on these certifications and their fees and requirements.

Tuition (starting 9/1/11) for the Essentials in Animal Chiropractic Course is between Five Thousand Seven Hundred and Fifty United States Dollars (\$5,750.00 USD) and Six Thousand United States Dollars (\$6,000.00 USD). (After 9/1/2012 \$5,975.00 USD and \$6,225.00 USD.) The difference is dependent on your option for payment (See page 3 of this application). In addition, there is a required list of books that will cost no more than Five Hundred United States Dollars (\$500.00 USD).

A student can terminate his/her application at any time; can withdraw from the course at any time; and the College can terminate a student's enrollment for insufficient progress, non-payment, or failure to comply with all rules as stated in the Course Catalog. Refund of all monies due the student will be made within 60 days of termination and will be determined by strict guidelines as regulated by K.S.A. 88-22-2 and as described on Page 3 of this Application and in the Course Catalog.

## Admission Requirements:

*(For a complete list of Admission Requirements please refer to the Course Catalog.)*

The Applicant must be a Chiropractor or Veterinarian; or, a Chiropractic or Veterinary Student in their last Semester/Trimester of study.

The Applicant must be in good standing in the areas in which he/she practices and with his/her professional associations.

### **With this signed and completed application, the applicant must include:**

- 1. A copy of his/her license, diploma, or supporting documents as described in the Course Catalog (Students please include a copy of your professional school transcript).
- 2. Payment as described on page 3. (Minimum \$350.00 USD Deposit.)

### **Application:**

Doctor's Name: \_\_\_\_\_

Degree:  DC  DVM  VMD License Number: \_\_\_\_\_ State/Country: \_\_\_\_\_

Contact Address and Phone:  Home  Business  Other \_\_\_\_\_

Street Address: \_\_\_\_\_

City: \_\_\_\_\_ State/Province: \_\_\_\_\_

Postal Code: \_\_\_\_\_ Country: \_\_\_\_\_

Daytime Phone: \_\_\_\_\_ Fax: \_\_\_\_\_

Email Address: \_\_\_\_\_ Website: \_\_\_\_\_

Emergency Contact Person: Name: \_\_\_\_\_

Relation to you: \_\_\_\_\_ Phone: \_\_\_\_\_

### **Deposit to Hold a Seat:**

Sessions often fill quickly. You are placed on the roster when a completed application and the deposit fee or tuition is received at the Options for Animal's office. If a group of modules is already filled, you will be notified and have the choice to be placed on a waiting list, have your application processed for the next most convenient session or have your application returned and money fully refunded.

The minimum DEPOSIT FEE to hold a seat is \$350.00 USD. Please remit the Deposit fee with this form if application is made more than thirty (30) days before the start of the first module. If you fail to enter the course, for any reason, all monies paid will be refunded within 40 days of withdrawal, less a non-refundable application fee of \$150.00 USD.

*(See the course catalog for specific details on refunds as regulated by K.S.A. 88-23-2.)*

**DO NOT MAKE TRAVEL ARRANGEMENTS** until you have written confirmation from Options on your placement and status. We cannot guarantee that you can attend if placed on a waiting list.

### **Payment Options: (Effective September 1, 2011)**

(Please check one of the following.)

- 1. **Payment in full is preferred and is discounted.** Total for the 5 Modules is \$5,750.00 USD. Full payment is due no later than the end of the first module. (After 9/1/2012 \$5,975.00 USD.)
- 2. **Standard Payment plan:** Consists of three payments of \$2,000.00 USD totaling \$6,000.00 USD. The first payment is due no later than the end of the first module. Payments two and three are due no later than the end of modules two and three. (After 9/1/2012 three payments of \$2,075.00 USD totaling \$6,225.00 USD.)

### **Forms of Payment:**

**All forms of payment should be made payable to: Options for Animals**

- 1. Bank Check in United States Funds,
- 2. United States Money Order or International Money Order,
- 3. Bank Transfers (Please contact the school for bank transfer information.), or
- 4. Visa, Mastercard, American Express, Discover and Debit cards are accepted.

Type of Card:  Visa  Mastercard  American Express  Discover  Debit

Charge Card Number: \_\_\_\_\_

Expiration Date: \_\_\_\_\_ 3-Digit Code on back of card. \_\_\_\_ \_

Cardholder's Name as it appears on the Credit Card: \_\_\_\_\_

Billing Address of Credit Card: \_\_\_\_\_

\_\_\_\_\_ Zip/Postal Code \_\_\_\_\_

Cardholder's Signature: \_\_\_\_\_

### IMPORTANT, PLEASE READ:

Every attempt is made to offer courses and seminars as announced. Options for Animals reserves the right to adjust course and seminar dates, times, locations, faculty and tuition to accommodate unexpected circumstances and occurrences. (Once enrolled, the tuition will not change as long as the course is completed within two years.) Every attempt will be made to notify paid registrants in advance of program changes. Options cannot be held responsible for expenses incurred by registrants if programs must be altered. Fees are subject to change without notice. This program is approved by the American Veterinary Chiropractic Association (AVCA), the International Veterinary Chiropractic Association (IVCA) and the Kansas Board of Regents.

Prior to signing this Enrollment Agreement, each Party has read and understands and agrees to all of the provisions of this Agreement. All provisions are enforceable as soon as the Applicant signs the Agreement and it is received by the College.

**Applicant:**

\_\_\_\_\_ Date: \_\_\_\_\_

**College Administrator:**

\_\_\_\_\_ Date: \_\_\_\_\_

**Please Submit this Enrollment Agreement (All four pages completed and signed) to the following address or fax number.**

**Registrations:**

**Options for Animals                      or Fax to: +1 678 721 2523**  
**PO Box 3682**  
**Cartersville, GA 30120 USA**

Above all else, Options for Animals cares about the health and comfort of animals. Each faculty member still runs his own animal chiropractic practice, ensuring that students can get the knowledge they need from teachers that are truly passionate about their work. Options for Animals College of Animal Chiropractic and all of its courses are approved by the American Veterinary Chiropractic Association and International Veterinary Chiropractic Association. The faculty is unique in that all of our instructors are certified by one or both of these agencies.”

## Other Faculty

As needed, from time to time, the College uses other AVCA and/or IVCA certified doctors to assist in teaching specialized topics and laboratories. This insures a low instructor to student ratio in all laboratory instruction. Following is a list of some of those assistants.

**Dr. Lisa Busko**  
**Dr. Travis Gratton**  
**Dr. Patty Glover**  
**Dr. Jean Thompson**  
**Dr. Bruce Indek**  
**Dr. Kyla Awes**  
**Dr. Pat Holl**  
**Dr. Gregg Coker**  
**Dr. Keith Wagner**  
**Dr. Kara Vittitow**

**Dr. Dan Hawkins**  
**Dr. Marilyn Maler**  
**Dr. Wolfgang Mayrhofer (Germany)**  
**Dr. Kirsten Becker (Germany)**  
**Dr. Jacob Anderson (Denmark)**  
**Dr. Donald Moffatt (Germany)**  
**Dr. Sybil Moffatt (Germany)**  
**Dr. Alexandra Keller (Germany)**  
**Dr. Andrea Sattler (Germany)**  
**Dr. Emma Fretwell (England)**

## Principal Instructors

Following are Biographies of the three Principal Instructors at Options for Animals. For more information on these preeminent faculty, please visit our website.

## Dr. Dennis Eschbach

*Licensed Chiropractor*

***Certified in Advanced Animal Chiropractic by the AVCA, Member and Past Board Member of the AVCA, Certified in Animal Chiropractic by the IVCA, Member of the IVCA  
Over 25 Years Experience in Animal Chiropractic Care  
Over 20 Years Experience in Teaching Animal Chiropractic***



Dr. Dennis Eschbach is a licensed Chiropractor living in the St. Louis Area of Missouri, where he and his wife raise and train Afghan Hounds, Salukis and a Chinese Crested. He graduated from Logan College of Chiropractic in 1984 after completing his early studies at St. Louis University. His degrees include a Bachelor of Science in Human Biology and a Doctor of Chiropractic. In 1982, the Eschbachs began their hobby of training and showing dogs. They presently own, and have owned, several generations of World Champion Afghans and Salukis in both confirmation and lure coursing. Dr. Eschbach has persistently adjusted his dogs and credits a lot of his consistent success in competing throughout North America, Central America, South America and Europe to regular chiropractic care for his animals.

In 1990, Dr. Eschbach's determination to attain further education in animal care lead him to Sharon Willoughby, D.C., D.V.M., and her classes on animal chiropractic called the American Veterinary Chiropractic Association. These classes were the only of their kind in the world, and attracted students from many nations. In 1992 the American Veterinary Chiropractic Association (AVCA) certified him in Animal Chiropractic (Cert. # 40). In 1995 he completed a more Advanced Diplomat program of the AVCA (Cert. # 003) and continues his search for further education today.

In addition to treating animal patients, in 1992 Dr. Eschbach became an International Instructor for, and a Board Member of, the AVCA. His early work was in developing the American Veterinary Chiropractic Association (AVCA) as well as co-founding and developing Options for Animals. Dr. Eschbach now co-owns and operates Options for Animals and Options for Animals College of Animal Chiropractic. He also co-owns and teaches OFA courses at the International Academy of Animal Chiropractic in the United Kingdom and is Curriculum Director and instructor of OFA courses at the International Academy of Animal Chiropractic in Germany. Dr. Eschbach was also a part of the faculty at the Healing Oasis Wellness Center in Wisconsin. He has taught hundreds (over 1000 of the 1100 animal chiropractors worldwide) of Chiropractors and Veterinarians around the world, including three trips to Australia hosted by the Veterinary Post-Graduate Division of the University of Sydney, and has been invited as a guest speaker in Germany for the International Sled Dog Veterinary Medical Association; in Denmark, Australia, Belgium and England for the Afghan Hound and Sighthound World Congresses; in Denmark for the Danish Veterinary Association; in Austria for the veterinary school in Vienna; & lectures at Parkland College and Illinois University Veterinary School in Champaign, Illinois.



With a primary interest in Animal Chiropractic Education & Research, Dr. Eschbach resigned from the Board of the AVCA in 2000. He has written several books, including Principles and Practice of Basic Animal Chiropractic Adjusting Techniques & Treating the Quadruped with Basic Technique.

Today Dr. Dennis Eschbach's Animal Chiropractic Services provide Animal Chiropractic Care, International Animal Chiropractic Education to Professionals, and International Lay Lectures on topics such as Animal Chiropractic, Integrative Animal Health Care and Equine and Canine Form and Function.

## Dr. Heidi Bockhold

**Licensed Chiropractor**  
**Advanced Certified in Animal Chiropractic**  
**Over 15 Years Experience in Animal Chiropractic Care**  
**Over 14 Years Experience in Teaching Human and Animal Chiropractic**

Dr. Heidi Bockhold is a licensed Chiropractor living in the Atlanta Area of Georgia, where she raises, trains and shows Australian Cattle Dogs, and breeds, trains and shows Paint Horses. Dr. Bockhold was born and raised in south Florida, where her family bred and trained racing thoroughbreds and show American Quarter Horses. As a teenager, Heidi also bred, trained and showed Shetland Sheep Dogs, was active in 4-H, as well as participated in many sports including soccer, racquetball and power lifting.

Dr. Bockhold attended Regents College in New York where she received a Bachelor of Science degree in Biology in June, 1994. She received her Doctor of Chiropractic Degree from Life University in Marietta, Georgia, in June, 1992.



After graduating from Life University, Dr. Bockhold opened a private chiropractic practice in Florida. In 1994, she returned to Life University and for the next seven years she was a clinical supervisor in the research department and technique instructor there. During her time at Life U., Dr. Bockhold was nominated three times for the “Who’s Who of College Professors”. Throughout this time, Dr. Bockhold maintained her practice in Florida.

With her vast experience with animals, throughout her chiropractic career Dr. Bockhold also treated animals. In March, 2000, she was certified in animal chiropractic by the American Veterinary Chiropractic Association (AVCA). Since that time she has completed the advanced course in animal chiropractic offered at Options for Animals.

In addition to treating animal patients, in 2000 Dr. Bockhold became an International Instructor for Options for Animals. She now co-owns Options for Animals and the Options for Animals College of Animal Chiropractic. In 2003, Dr. Bockhold also co-founded the International College of Animal Chiropractors.

Today Dr. Bockhold’s Animal Chiropractic Services provide Animal Chiropractic Care to both large and small animals. She lectures internationally to lay and professional audiences on a wide variety of topics such as Animal Chiropractic, Integrative Animal Health Care and Equine and Canine management.



## Dr. Drew Spisak

*Licensed Veterinarian*

*Advanced Certified in Animal Chiropractic by the AVCA  
Over 13 Years Experience in Animal Chiropractic Care  
Over 10 Years Experience in Teaching Animal Chiropractic*



Dr. Drew Spisak is a licensed Veterinarian living in the Kansas City Area of Kansas, where he and his wife Diane have a small farm. The farm is home to horses, world class Akbash Dogs, border collies, several cats (Speedy is his favorite), a flock of sheep, and several types of exotic birds and chickens. If that isn't enough to keep him busy, Drew loves to play golf and fly general aviation aircraft. After completing a tour of duty in the Air Force, Dr. Spisak attended Kansas State University where in 1976 he completed a Bachelor of Science Degree in Biology, in 1980 he completed a Bachelor of Science Degree in Dairy Science and in 1985 he completed his degree of Doctor of Veterinary Medicine.

In 1994, Dr. Spisak's determination to attain further education in animal care lead him to Sharon Willoughby, D.C., D.V.M., and her classes on animal chiropractic called the American Veterinary Chiropractic Association. These classes were the only of their kind in the world, and attracted students from many nations. In 1995 the American Veterinary Chiropractic Association (AVCA) certified him in Animal Chiropractic (Cert. # 111). In 2000 he completed a more Advanced Diplomat program of the AVCA and continues his search for further education today.



In addition to treating animal patients, in 1996 Dr. Spisak became an International Instructor for, and a Board Member of, the AVCA. Dr. Spisak now co-owns Options for Animals and Options for Animals College of Animal Chiropractic. With a primary interest in Animal Chiropractic Education & Research, Dr. Spisak resigned from the Board of the AVCA in 2000 and co-founded the International College of Animal Chiropractors in 2003.



Today Dr. Spisak's Wellsville Veterinary Clinic provides traditional and chiropractic veterinary care for both large and small animals. He teaches and lectures to international audiences, and he has been involved in groundbreaking research.



***Options for Animals College of Animal Chiropractic***  
is located in Kansas, approximately 35 miles southwest of Kansas City Missouri.

**Our address is 4267 Virginia Road, Wellsville, KS, 66092.**

# Travel

## Airport

The closest airport is the Kansas City International Airport in Kansas City, Missouri (about 60 miles from Wellsville). The Airport Code is **MCI**, (*NOT KCI*).

## Car Rental

Most here are several major car rentals located at the airport. Shuttle Service is provided to these rental agencies.

**Driving Directions to the College**  
**Set GPS to: 4267 Virginia Rd, Wellsville,**  
**Kansas, 66092.**

### From the Airport (MCI Kansas City International) on Airport Exit Drive:



Merge onto I-29 N/ US-71 N via the ramp on the LEFT.



Merge onto I-435 S via EXIT 17 toward TOPEKA (Crossing into KANSAS). 31.5 mi



Merge onto I-35 S/ US-50 W via EXIT 83 toward WICHITA. 24.6 mi



Take the KS-33 exit, EXIT 198, toward WELLSVILLE. 0.3 mi



Turn LEFT onto KS-33. 0.7 mi



Turn RIGHT onto SHAWNEE RD. 0.5 mi



Turn LEFT onto VIRGINIA RD. 0.2 mi



End at 4267 Virginia Rd Wellsville, KS 66092-8860

### From the East (St. Louis or Columbia, Missouri) on I-70 West toward Kansas City:



Merge onto I-435 S via EXIT 8A toward WICHITA (Crossing into KANSAS). 20.5 mi



Merge onto I-35 S/ US-50 W via EXIT 83 toward WICHITA. 24.9 mi



Take the KS-33 exit, EXIT 198, toward WELLSVILLE. 0.3 mi



Turn LEFT onto KS-33. 0.7 mi



Turn RIGHT onto SHAWNEE RD. 0.5 mi



Turn LEFT onto VIRGINIA RD. 0.2 mi



End at 4267 Virginia Rd Wellsville, KS 66092-8860

## From the West (Denver, Colorado or Topeka, Kansas) on I-70 East toward Kansas City:



Take the KS-10 exit, EXIT 197, toward LECOMPTON/ LAWRENCE. 0.4 mi



Turn RIGHT onto KS-10. 8.0 mi



Take the KS-10/ US-59 ramp toward LAWRENCE/ OTTAWA. 0.3 mi



Turn RIGHT onto E 1300 RD/ US-59 S. Continue to follow US-59 S. 9.6 mi



Turn LEFT onto N 300TH RD/ US-56. Continue to follow US-56. 10.8 mi



Turn RIGHT onto E 2300TH RD/ KS-33. Continue to follow KS-33. 5.1 mi



Turn RIGHT onto SHAWNEE RD. 0.5 mi



Turn LEFT onto VIRGINIA RD. 0.2 mi



End at 4267 Virginia Rd Wellsville, KS 66092-8860

## From the North (St. Joseph, Missouri) on I-29 South toward Kansas City:



Merge onto I-435 S via EXIT 17 toward TOPEKA (Crossing into KANSAS). 31.5 mi



Merge onto I-35 S/ US-50 W via EXIT 83 toward WICHITA. 24.6 mi



Take the KS-33 exit, EXIT 198, toward WELLSVILLE. 0.3 mi



Turn LEFT onto KS-33. 0.7 mi



Turn RIGHT onto SHAWNEE RD. 0.5 mi



Turn LEFT onto VIRGINIA RD. 0.2 mi



End at 4267 Virginia Rd Wellsville, KS 66092-8860

## From the North (Des Moines, Iowa) on I-35 South toward Kansas City:



Keep LEFT to take US-71 S via EXIT 3 toward I-70 E. 0.6 mi



Take the I-670/ US-71 S exit, EXIT 2L, toward I-35 S/ WICHITA. 0.1 mi



Merge onto I-670 W/ I-70 ALT W via EXIT 2M toward I-35 S/ WICHITA. 0.9 mi



Merge onto I-35 S via EXIT 2T toward WICHITA (Crossing into KANSAS).

39.5 mi



Take the KS-33 exit, EXIT 198, toward WELLSVILLE. 0.3 mi



Turn LEFT onto KS-33. 0.7 mi



Turn RIGHT onto SHAWNEE RD. 0.5 mi



Turn LEFT onto VIRGINIA RD. 0.2 mi



End at 4267 Virginia Rd Wellsville, KS 66092-8860

From the South (Dallas, Texas or Oklahoma City, OK) on I-35 North toward Kansas City: (Portions of I-35 may be Toll)



Take the KS-33 exit, EXIT 198, toward WELLSVILLE. 0.3 mi



Turn RIGHT onto KS-33. 0.6 mi



Turn RIGHT onto SHAWNEE RD. 0.5 mi



Turn LEFT onto VIRGINIA RD. 0.2 mi



End at 4267 Virginia Rd Wellsville, KS 66092-8860

## Lodging

### Hotels

A variety of Hotels are available within 15 to 30 minutes driving time from the main campus. These hotels have a wide variety of amenities and costs. Following is a short list of some of the hotels that are frequented by our students. These are listed by location.

**Mention Options for Animals while making reservations for possible rate discount on rooms.**

### OLATHE, KANSAS – 17 MILES NORTH OF WELLSVILLE ON I-35

\*\*\*\*\*

#### CANDLEWOOD SUITES

Phone: (913) 768-8888

15490 S Rogers Rd, Olathe, KS 66062 US

**Special Options for Animals Pricing!! Student Rate is \$42 per night plus tax until Dec 2012 (Also Discounts on Suites for 2 or More! Contact Candlewood for Details,)**

<http://www.ihg.com/h/d/CW/1/en/rates?hotelCode=MKCEE&rateCode=IP458&IATAno=99502056>

#### HOLIDAY INN

Phone: (913) 829-4000

101 West 151<sup>st</sup> Street

Fax: (913) 829-8165

<http://www.ichotelsgroup.com/h/d/pc/1/en/hotel/mkcol?rpb=hotel&crUrl=/h/d/pc/1/en/hotelsearchresults>

#### La Quinta Inn & Suites; Olathe

Phone: (913) 254-0111

20570 W 151st Street

Fax: (913) 254-0777

Olathe, KS 66061

[http://www.lq.com/lq/properties/propertyProfile.do?ident=LQ6199&propId=6199&savedSesavedSear=%2FIq%2FproxySearchRes.do%3FsearchCity%3DOlathe%26searchState%3DDK%26searchRadius%3D30%26indate%3D04%252F23%252F2009%26availability.palsra\\_IIN\\_D%3D23%26availability.palsra\\_IND\\_M%3D04%26availability.palsra\\_IND\\_Y%3D2009%26outdate%3D04%252F24%252F2009%26availability.palsra\\_OTD\\_D%3D24%26availability.palsra\\_OTD\\_M%3D04%26availability.palsra\\_OTD\\_Y%3D2009%26availability.palsra\\_RPC1%3D%26availability.palsra\\_CCN1%3D%26availability.palsra\\_NRM%3D1%26mapProvider%3DMapQuest%26searchType%3DGEO%26promo corp%3D](http://www.lq.com/lq/properties/propertyProfile.do?ident=LQ6199&propId=6199&savedSesavedSear=%2FIq%2FproxySearchRes.do%3FsearchCity%3DOlathe%26searchState%3DDK%26searchRadius%3D30%26indate%3D04%252F23%252F2009%26availability.palsra_IIN_D%3D23%26availability.palsra_IND_M%3D04%26availability.palsra_IND_Y%3D2009%26outdate%3D04%252F24%252F2009%26availability.palsra_OTD_D%3D24%26availability.palsra_OTD_M%3D04%26availability.palsra_OTD_Y%3D2009%26availability.palsra_RPC1%3D%26availability.palsra_CCN1%3D%26availability.palsra_NRM%3D1%26mapProvider%3DMapQuest%26searchType%3DGEO%26promo corp%3D)

#### Best Western

Phone: (913) 440-9762

1580 S Hamilton Circle

Fax: (913)-440-9764

<http://www.bestwesternolathe.com/>

## GARDNER, KANSAS – 12 MILES NORTH OF WELLSVILLE ON I-35

### **SUPER 8**

2001 East Santa Fe

Phone: (913) 856-8887

Fax: (913) 856-8645

[http://www.super8.com/Super8/control/Booking/check\\_avail?brandCode=SE,MQ,DI,HJ,KG,RA,TL,BU&searchWithinMiles=25&areaType=1&destination=Gardner&stateName=Kansas&state=KS&countryName=United%20States&country=US&checkInDate=04/01&numberAdults=1&numberRooms=1&checkOutDate=04/02&numberChildren=0&rateName=Best%20Avail&rate=000&variant=&id=02778&propBrandId=SE&force\\_nostay=false](http://www.super8.com/Super8/control/Booking/check_avail?brandCode=SE,MQ,DI,HJ,KG,RA,TL,BU&searchWithinMiles=25&areaType=1&destination=Gardner&stateName=Kansas&state=KS&countryName=United%20States&country=US&checkInDate=04/01&numberAdults=1&numberRooms=1&checkOutDate=04/02&numberChildren=0&rateName=Best%20Avail&rate=000&variant=&id=02778&propBrandId=SE&force_nostay=false)

## OTTAWA, KANSAS – 13 MILES SOUTH OF WELLSVILLE ON I-35

### **ECONOLOGGE**

Ramesh Patel

2331 South Cedar

Phone: (785) 242-3400- Ask for

Fax (785) 242-2228

[http://www.econolodge.com/ires/enUS/html/HotelInfo?hotel=KS031&sid=qP9fi.IrQ1mg\\_lg.7&sarea=9739&sname=Ottawa&sstate=KS&scountry=US&sradius=40.23&slat=38.6156&slon=95.2675&schain=E&exp=&scity=&sort=&type=&map=n&nroom=1&nadult1=1&nchild1=0&nadult2=1&nchild2=0&nadult3=1&nchild3=0&nadult4=1&nchild4=0&nadult5=1&nchild5=0](http://www.econolodge.com/ires/enUS/html/HotelInfo?hotel=KS031&sid=qP9fi.IrQ1mg_lg.7&sarea=9739&sname=Ottawa&sstate=KS&scountry=US&sradius=40.23&slat=38.6156&slon=95.2675&schain=E&exp=&scity=&sort=&type=&map=n&nroom=1&nadult1=1&nchild1=0&nadult2=1&nchild2=0&nadult3=1&nchild3=0&nadult4=1&nchild4=0&nadult5=1&nchild5=0)

### **DAYS INN**

1641 S Main Street

Phone: (785) 242-4842

Fax (785) 242-7325

[http://www.super8.com/Super8/control/Booking/check\\_avail?brandCode=SE,MQ,DI,HJ,KG,RA,TL,BU&searchWithinMiles=25&areaType=1&destination=Ottawa&stateName=Kansas&state=KS&countryName=United%20States&country=US&checkInDate=04/01&numberAdults=1&numberRooms=1&checkOutDate=04/02&numberChildren=0&rateName=Best%20Avail&rate=000&variant=&id=04617&propBrandId=DI&force\\_nostay=false](http://www.super8.com/Super8/control/Booking/check_avail?brandCode=SE,MQ,DI,HJ,KG,RA,TL,BU&searchWithinMiles=25&areaType=1&destination=Ottawa&stateName=Kansas&state=KS&countryName=United%20States&country=US&checkInDate=04/01&numberAdults=1&numberRooms=1&checkOutDate=04/02&numberChildren=0&rateName=Best%20Avail&rate=000&variant=&id=04617&propBrandId=DI&force_nostay=false)

## BALDWIN CITY, KANSAS – 8 MILES OF WELLSVILLE ON HWY 56

### **THE LODGE**

502 Ames St

Phone: (785) 594-3900

[http://maps.google.com/maps?hl=en&rlz=1T4RNWK\\_enUS250US257&um=1&ie=UTF-8&q=The+Lodge,&near=Baldwin+City,+KS&fb=1&view=text&latlng=38782218,-95184800,513258637525288181](http://maps.google.com/maps?hl=en&rlz=1T4RNWK_enUS250US257&um=1&ie=UTF-8&q=The+Lodge,&near=Baldwin+City,+KS&fb=1&view=text&latlng=38782218,-95184800,513258637525288181)

## *House Rental*

### **ROOMS IN HOUSE FOR RENT**

#### **SPRING HILL, KANSAS – 26 MILES NORTH OF WELLSVILLE ON I-35**

This is a full house that has 4 bedrooms for rent on 5 acres. Please contact Robbie to request pictures to be emailed. The rate per night is \$40.00. If interested contact Jerry Knight at 913-488-9751 or email at [jknight2251@yahoo.com](mailto:jknight2251@yahoo.com).

## *Camping*

### **HILLSDALE LAKE STATE PARK (CAMP GROUNDS) – 16.75 MILES NORTH ON I-35**

EMAIL – [WWW.KDWP.STATE.KS.US](http://WWW.KDWP.STATE.KS.US)  
273-6740

PHONE: (913) 783-4507 AND (785)



SINCE GRADUATING THE FIRST CLASS IN 1989, THE OPTIONS FOR ANIMALS COLLEGE OF ANIMAL CHIROPRACTIC HAS GRADUATED MORE THAN 2000 ANIMAL CHIROPRACTORS, WHO SERVE ALL OVER THE WORLD (IN 28 COUNTRIES AND ON 6 CONTINENTS) IN LARGE AND SMALL ANIMAL PRACTICES, GOVERNMENT, ACADEMIA, AND CORPORATIONS. A NUMBER OF RESPECTED RESEARCHERS ALSO CALL OPTIONS FOR ANIMALS ITS ALMA MATER.

